



KINEMATIC ENGINEERING &  
COSNTRUCTION SDN BHD

# COMPANY PROFILE



2025 EDITION

2025

# AN INTRODUCTION

---

KEC - KINEMATIC ENGINEERING & CONSTRUCTION SDN BHD is a construction company specialized in civil, building, M&E, ID & Engineering solution. Incorporated in 2011, our company is managed by experienced and dedicated team of engineers and contract professionals with the ability and capability to deliver on time and quality works.

Register CIDB, SPKK G7, KEC is one of the renown player in Malaysian construction industries especially in Highway maintenance and structural repair works.

In addition to this, our company also acquire professionals with certified Construction Health & Safety Officer (CIDB), Traffic Management Officer (CIDB), and Certified Professional for Erosion & Sediment Control (CPESC), ISO9001:2015.

We are constantly searching for more challenging projects, driven by our commitment to quality and innovation with a passion to ensure a great success for our clients. The greatest advantage of our establishment will be our affiliation with our working counterparts which provide a full range of support to our course.



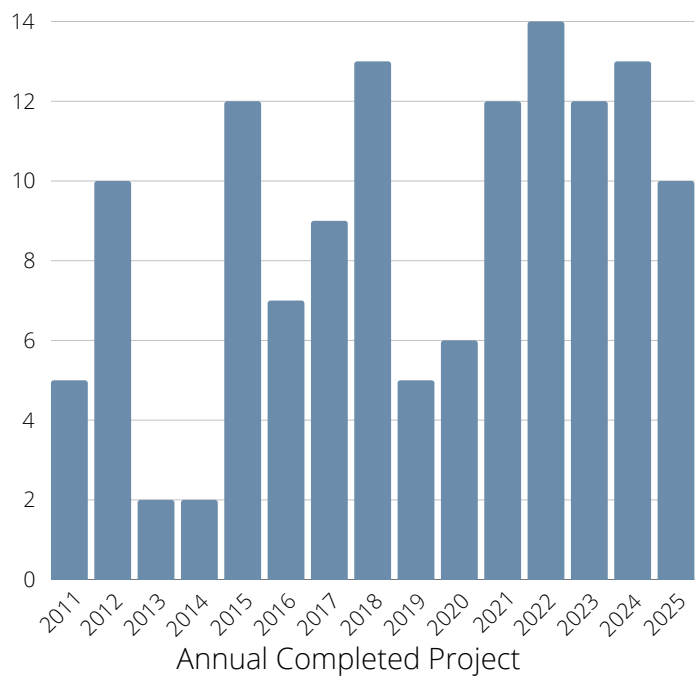
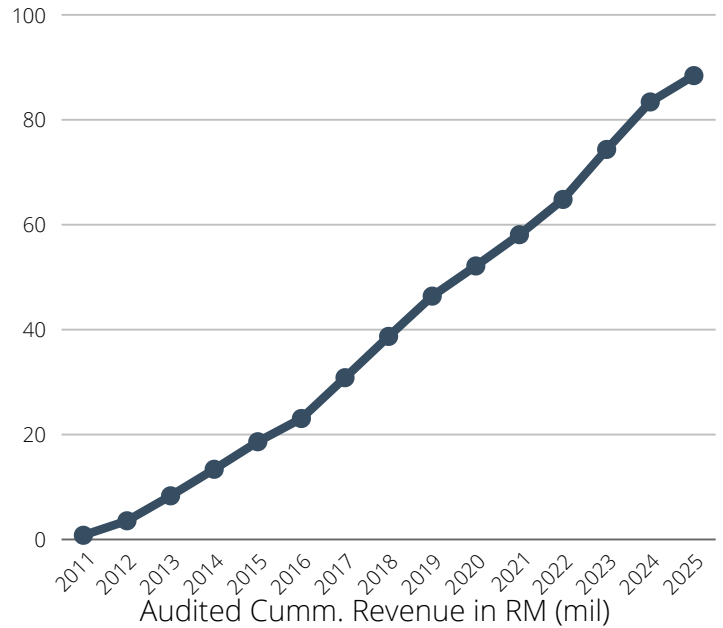
Where we are  
**TODAY**

through the years, KEC had established ourselves in the market with an average growth of 90.93% per year over the period of 13 years from 2011 to 2024.

Our perseverance had shown a positive growth from year to year. KEC also gain traction with increasing customer base and successful engagement in the highway maintenance sector. To date, we are registered vendor for several major highway concession such as PLUS, BESRAYA, LPD, NPE, LEKAS, MEX, SKVE & MTD as well as key highway maintenance operator such as Edgenta Propel Berhad.

Base on our track record, we had cumulatively completed more than 100 projects through 13 years of period with ZERO record of project failure.

*"Being success in construction industries requires our passion and commitment"*



# Our History OVERVIEW

Through the years, KEC had strived to establish ourselves in the construction industry. Successfully growing and sustain through the challenging market, showing high level of endurance and perseverance.

# OUR MISSION & VISION STATEMENT

---

## Our Missions:

- To be successful in Malaysian construction industries
- To be Best Perform Contractor in all our projects
- To be the Best working partner with our client

## Our Vision:

- To ensure customer's full satisfaction
- To serve our client with professional ethic
- To have full attention in all aspects of services offered
- To care for our client concerns and
- To carry out our social responsibilities during our course of success

*"There is none the best in the world,  
it just got better"*



# OUR ACHIVEMENTS



PLATINUM BUSINESS AWARDS

2019 SERVICE EXCELLENCE  
PLATINUM BUSINESS AWARD

**PLATINUM**  
BUSINESS AWARDS 2016



2016 RISING STAR AWARD  
PLATINUM BUSINESS AWARD

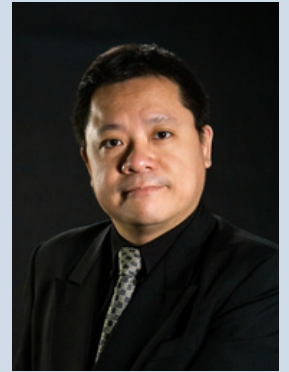


2015 RISING STAR AWARD  
SME RECOGNITION AWARD



*Our Founder and Director  
Prof. Dr. Liew Taik Hwa*

# OUR CORPORATE STRUCTURE



*Our Board of Director  
Prof. Dr. Liew Taik Hwa*

## ADMINISTRATIVE & FINANCE DEPARTMENT



## CONTRACT & COMMERCIAL DEPARTMENT



## QSHE DEPARTMENT



## ENGINEERING & DESIGN DEPARTMENT



## PROJECT DEPARTMENT



# OUR QUALITY SAFETY HEALTH ENVIRONMENTAL POLICY

Our continue success in the industry demands our ability & commitment to continually improve the quality of our services and products while protecting people and the environment.

We must ensure human health, operational safety, environmental protection, quality enhancement, and community goodwill. Which is in the best interests of our customers, our employees and contractors, and the communities where we live and work.

We strive to actively improve the accountability for QHSE from all employees and contractors. Management team has a leadership role in the communication and implementation of and ensuring compliance with QHSE policies and standards.

We are committed to the following:

- protect and strive for improvement of the health, safety, and security of our people at all times
- eliminate quality NCR and HSE accidents
- meet specified customer requirements and ensure continuous customer satisfaction
- set quality and HSE performance objectives; measure results; and assess and continually improve processes, services, and product quality through the use of an effective management system
- minimize our impact on the environment through pollution prevention, reduction of natural resource consumption and emissions, and the reduction and recycling of waste
- apply our technical skills to all HSE aspects in the design and engineering of our services and products
- communicate openly with stakeholders and ensure an understanding of our QHSE policies, standards, programs and performance; reward outstanding QHSE performance

# OUR PLEDGE TO ANTI BRIBERY & CORRUPTION

---


We have zero-tolerance position for bribery and corrupt activities and are committed to act professionally, fairly and with integrity in all our business dealings and relationships. We are committed to implement and practice in our management systems that ensure corruption and bribery is prevented.

In particular to all our personnel, we shall prevent and eliminate:

- Corruptly soliciting, receiving or agreeing to receive any gratification whether for him/herself or for any other person; or
- Corruptly giving, agreeing to give, promising or offering to any person any gratification whether for the benefit of him/herself or of another person, including with intent to obtain or retain business or any advantage in the conduct of business for the Bank.

We shall uphold all laws and regulatory requirements relating to anti-bribery and corruption in all the jurisdictions in which it operates. Any violation of the ABC Policy will result in actions including but not limited to, review of employment or appointment, disciplinary actions, dismissal, stop third party contractors/service providers from further business dealing etc., as well as report to the relevant authorities any wrongdoings, consistent with the requirements of the relevant laws and regulations

***“Integrity, transparency and the fight against corruption have to be part of the culture. They have to be taught as fundamental values.”***



KINEMATIC  
ENGINEERING &  
CONSTRUCTION  
SDN BHD

PLEDGE TO SUCCESS

---

# OUR SERVICES

---

EST. SINCE 2011

## OUR CERTIFICATION

---

### **CIDB G7 SPKK**

0120120514-WP142647  
since 14/05/2012

### **B/CE/ME**

B04, B05, B06, B07, B08, B14,  
B21, B24, B28  
CE01, CE02, CE08, CE10, CE11,  
CE13, CE14, CE21, CE29, CE32,  
CE42, CE43  
E02, E03, E06, E07, E10, E11,  
E13, E14, E16, E17  
M01, M02, M15

### **MOF**

K10112145282951968  
since 29/06/2021

030501,080101,090201,221001  
221002,221005,221006,221401  
221402



# OUR CERTIFICATION

## SPAN

SPAN/D(P)/SEL/2024/005860

SPAN/D(A)/SEL/2024/005859

## ISO 9001:2015

Z4WB9TCU20260511MYSQM1  
5C



# PROJECT MANAGEMENT CONSULTATION

In project management, we will undertake project management responsibilities from our client in all aspect or which task given. In turn, we will also represent our client in all related liaison activities with their main client as well as local authorities.

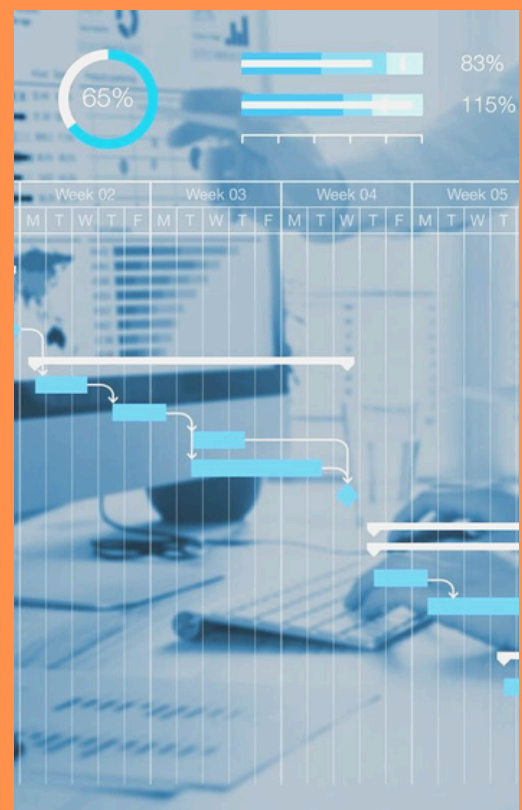
This covered activities from the inception, planning, design, execution, commissioning & continuous maintenance.

Outsource project management can help our client to better control their project management cost and risk while ensuring the quality or works



## FEATURING:

- Project Feasibility Study
- Project Planning & Scheduling
- Project Budgeting & Cost Control
- Project Liaison
- Project Claim & Contract Management
- Project Procurement & Subcontract
- Project Execution Management
- Project Final Analysis
- Project Maintenance Management



## **BUILDING CONSTRUCTION - STRUCTURE, M&E, ARCHITECTURAL, INFRA & LANDSCAPE**

We undertake main contract work for building projects. This includes the overall construction process from earthwork, sub-structures, structures and finishing works.

In addition to civil & structure capabilities, we are also M&E contractor with (ST and SPAN Permits). This ensure better understanding of all building interfaces.

Vast experienced personnel in our organization also ensure the deliverables along with QSHE compliance.



### **FEATURING:**

- Earthwork & Other Temporary works
- Piling & Substructures works
- Steel & RC Structures works
- IBS
- Mechanical & Electrical works
- Architectural Finishing & Landscape
- Fire Fighting, water & sewerage works
- Civil & Infra works



## **CIVIL CONSTRUCTION - ROAD, DRAINAGE, STP, PIPES, BRIDGE, SLOPE & CABLES**



We undertake Main Contract for civil infrastructure project. This includes those required specialized equipment and machinery as well as traffic management control.

In addition to the resources to carry out the work, we also have personnel with TMO & CPES which can better assure on the safety execution works.

We are regular vendors for highway maintenance and upgrading works.



## **FEATURING:**

- **Road & Pavement works**
- **Road Furniture: Guardrail Concrete NJB Signages Road Marking**
- **Culvert & Drainage works**
- **Bridge, Abutment & Crossing**
- **Slope Gabion, Shotcrete & Soil Nail**
- **STP**
- **Water and sewerage Pipes**
- **Power & Fiber Optic Cables**

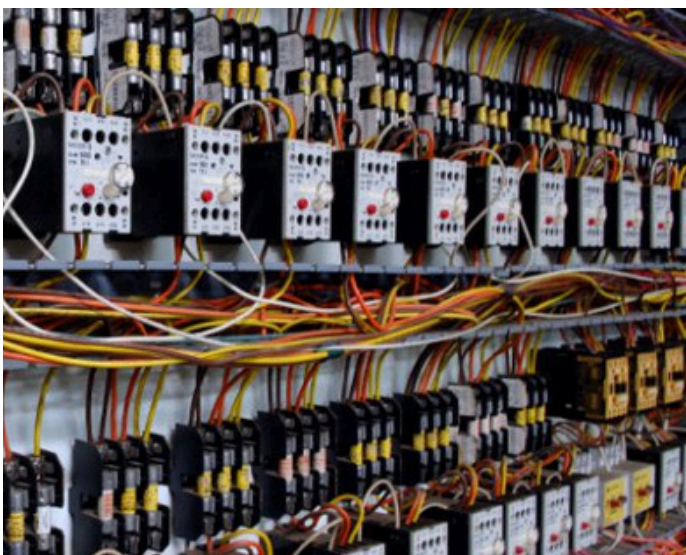


## **MECHANICAL & ELECTRICAL - WIRING, CCTV, FIBER OPTIC, FIRE FIGHTING, ENERGY SAVING, & AHU**

We undertake NSC contract for M&E works. This includes the overall design, supplies, installation, commissioning & maintenance of a project.

We are ST & CIDB registered M&E contractor. Qualified for low voltage electrical works for indoor or outdoor.

In addition, we are also specialized in energy saving solution will collaboration with proprietary manufacturers.



## **FEATURING:**

- Indoor & Outdoor wiring works
- Fittings, CCTV, & Security System
- Fire Fighting
- Energy Saving Solutions
- Air Conditioning: HVAC Split Unit ACHE & Chiller
- Renewable Energy Solutions PV Solar Waste Heat Recovery
- Escalator & Lift
- Building Maintenance
- Pumps & Generator
- Fiber Optic Installation
- Underground Utility Detection

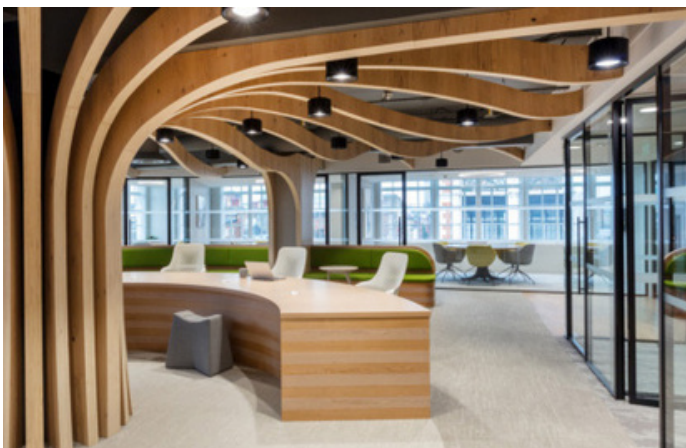


## **INTERIOR DESIGN FITOUT- ELECTRICAL, FIRE PROTECTION, INTERIOR FEATURES, AIRCON & FURNITURE**

We undertake Main Contract for fit out project. This includes process for interior design, supplies, construct, commissioning & maintenance.

We have built strong relationships with our customers: long-term partnerships supported by our commitment to innovation that advances our customers' interests.

We are well supported by manufactures which ensure on time of our supply chains



## **FEATURING:**

- **Interior Design & Specification Listing**
- **Electrical Wiring, Fittings, CCTV, & Security system**
- **Fire Protection system**
- **Air Conditioning & Ventilation system**
- **Ceiling & Partition**
- **Aluminum, Iron, Carpentry & Glass Works**
- **Customize & Loose Furniture**
- **Raised Floor, Floor Finishing works**
- **Internal Plumbing & Piping**
- **Signages & Wall Finishes**



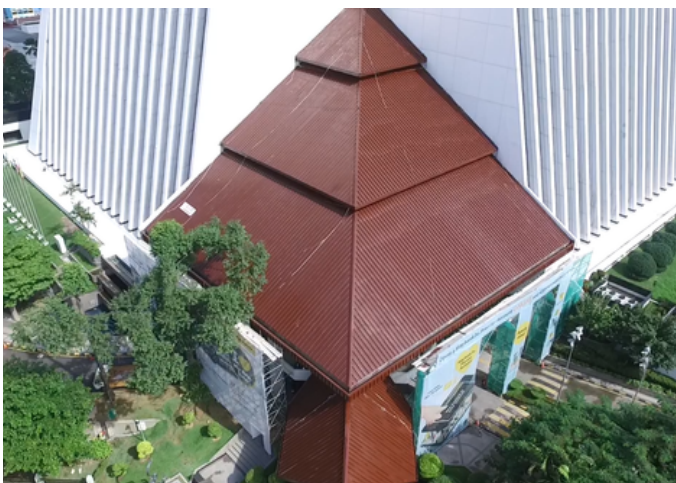
## **STRUCTURAL RECTIFICATION - DEMOLITION, RETROFIT, & REPAIR**

We undertake specialized repair & rectification work from our client which includes design and repair solution

Main scope normally involve design, demolition, repair, and reinstatement.

The challenges is on live traffic building where user is still working in the building while the repair work is on-going. this involve precise engineering, high level of QSHE control.

since it is rectification work, there is no more room for error.



### **FEATURING:**

- **Engineering design solution**
- **Temporary Works, Access, Safety, Traffic, Environmental measures**
- **Precise Demolition**
- **Waterproofing & Protective Coating**
- **Cracks Repair and Observation**
- **Pressure Grouting**
- **RC Structure, Steel Structure Modification & Alteration**
- **NDT**
- **Carbon Fiber Reinforcement**



## ENGINEERING SOLUTIONS - DESIGN & BUILD DESIGN & IMPLEMENTATION

We are a team of engineers, we collaborate with clients to provide the best integrated design solutions.

We provide design and build solution to our client, which innovates and follow the latest industry trends, standards, technologies, and codes requirements.

We provide a holistic design view and evaluate each project and its unique requirements, goals, and challenges while maintaining budget forecasts.



## FEATURING:

- **Engineering & Architectural design**
- **Engineering & Mechanical design**
- **Traffic Management Plan & system**
- **UD Mapping & Relocation**
- **Customized Access Platform**
- **Customized Heavy Duty Shoring**
- **Customized Residential, Commercial & Industrial Building**
- **Facilities Management**



# DEDICATION TO OUR CLIENTS

---

*"Quality of works can be expected through personal satisfaction, dedication & enjoyment. In our profession, precision and perfection are not a dispensable luxury but a simple necessity"*

*"Our talent determines what we can do. Our motivation determines how much we're willing to do. Our attitude determines how well we do it"*

*"Safety is not an intellectual exercise to keep us in work. It is a matter of life and death. It is the sum of our contributions to safety management that determines whether the people we work with live or die"*





KINEMATIC ENGINEERING &  
COSNTRUCTION SDN BHD

CORPORATE ADDRESS:

MEZZANINE 1B, NEMARA PKNS,  
17 JALAN YONG SHOOK LIN, SEKSYEN 7,  
46050 PETALING JAYA, SELANGOR.



[www.kecgroup.info](http://www.kecgroup.info)



[connect@kecgroup.info](mailto:connect@kecgroup.info)

---

2025 EDITION